



Empowered, enriched and equipped
good humans and learners for life.

Mona Vale Public School

15 February, 2024

2024 School Year



MONA VALE
PUBLIC SCHOOL



MONA VALE
PUBLIC SCHOOL

Acknowledgement of Country

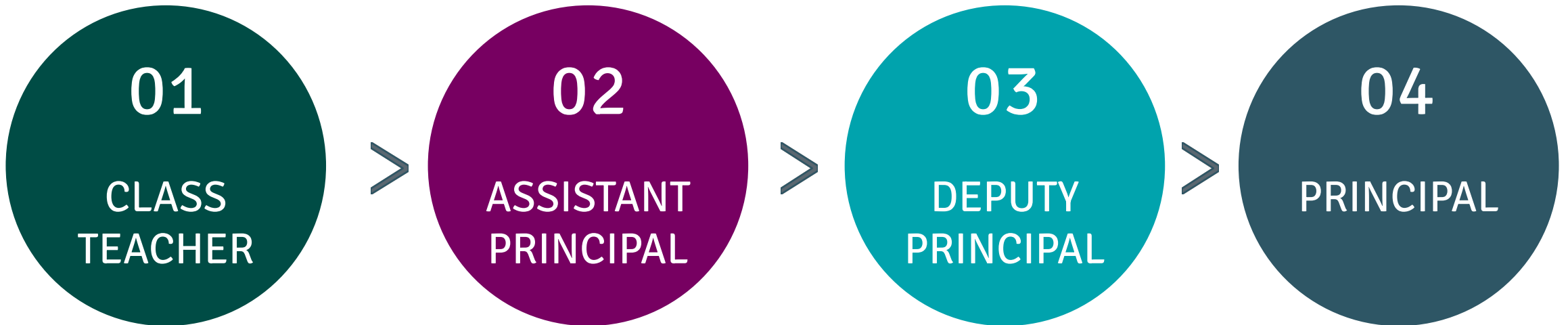
We are grateful to be able to show our respect to the Traditional People of this land, the Elders past, present and upcoming. We are honoured to be able to learn and play on this land surrounded by the ocean, bushland and the waterways of Pittwater. Our hope for the future is for a better understanding of our local history and culture.

Year 6 Classes and teachers

Assistant Principal	Miss Karina Singh
Class	Teacher
6 Silver	Miss Fiona Kelsall
6 Purple	Miss Claudette Blake
6 Blue	Miss Charlotte Gobbe (M)/Mr Richard Goodwin (T-F)
6 Yellow	Mr David Gray
6 Orange	Miss Madi Smithies

Line of Communication

Please always contact your class teacher with any questions or concerns about your child. Class teachers should always be contacted prior to contacting the Assistant Principal, Deputy Principals or Principal.



Voluntary Parent Contact Information & Class Parent

Please complete the voluntary parent contact form and class parent nomination form available here today. These will also be placed on the school website.

The voluntary parent contact information form will be provided to the class parent.

Role of the Class Parent:

Class parents play an important role in the school. They facilitate communication between parents and class teachers and assist in the coordination of helpers for school events. Please see the handout in your Meet the Teacher pack for more detail.



Empowered, enriched and equipped
good humans and learners for life.



MONA VALE PUBLIC SCHOOL

THE ROLE OF THE CLASS PARENT AND EXPRESSION OF INTEREST

Thank you for considering the role of Class Parent. The following is a brief role statement of what is involved. Please do not hesitate to contact the school should you require any further clarification.

Class Parent Overview:

Class parents play an important role in the school. They facilitate communication between students, parents and class teachers and assist in the co-ordination of helpers for school events.

Role competencies:

- Willingness to co-ordinate and organise class activities.
- Willingness to co-ordinate helpers and liaise with P&C for school events or initiatives.
- Willingness to have fun!

Role description:

The role of Class Parent varies according to the individual needs of each class, however it usually includes the following:

- Organising a *voluntary* class contact list of parent names & details and communicating with parents should the class teacher require it
- Co-ordinating parent support to the class teacher. (e.g. helping to find reading helpers, etc)
- Co-ordinating social activities for the class if desired (e.g. picnics, holiday activities, end-of-year functions)
- Attending any Class Parent meetings.

Please note: When communicating with parents, blind copy or BCC, should be used in all emails used for class distribution. If you are unsure of how to use this function, our school office staff can assist.

If you are interested in being the Class Parent, please complete the slip below and return to your child's teacher. If multiple slips are returned, the name will be drawn out of a hat. In some cases, the role may be shared between two parents if desired.

Thank you for considering this valuable position in our school.

Expression of Interest for Class Parent

I am interested in being the Class Parent for class: _____

Name: _____ Phone: _____

Email address: _____

I have been a Class Parent before: Yes / No

Waratah Street, Mona Vale NSW 2103 / Phone: 02 9939 3481
monavale-p.schools@det.nsw.edu.au / monavale-p.schools.nsw.edu.au

Student Absences

If your child is arriving to school late, or being collected early, please provide a written note or send an email to your class teacher.

Late arrivals: any child arriving after 8:50am will need to arrive at the main Waratah street gate (with a parent). Please use the intercom to contact the office to let them know of your child's arrival.

Early departure: If you need to collect your child early, please contact your class teacher or the school office prior to arriving to collect your child. Your child will need to go to the office to sign out. Please arrive at the main Waratah gate and use the intercom to let the office know you have arrived. A staff member will walk your child to the gate to meet you.

Absences: If your child is unwell or absent from school, please email the school as soon as possible. If your child is likely to miss more than one day of school, indicate this in email or letter to the class teacher.

If your child is absent for more than 2 consecutive days and we have not heard from a parent or family member, the class teacher will contact you.

Attendance

Regular attendance at school is essential for students to achieve quality life outcomes. Schools, in partnership with parents, are responsible for promoting the regular attendance of students.

If you are planning a holiday and will be away for 10 school days please download the holiday exemption form from our website. Please email the completed form to the school.

Days missed = years lost

A day here and there doesn't seem like much, but...



Communication

Our school newsletter is published fortnightly (even weeks) and sent out via the app.

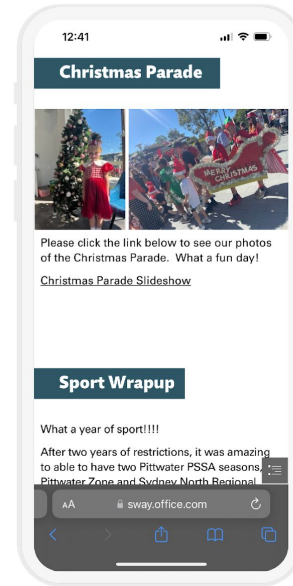
Don't forget to download the **Flexischools** app to receive important school notifications. If you already have the app, please also remember to update your child's class this year.

The P&C Facebook page is the officially endorsed social media platform for the parent community. Administered by volunteers, it is endeavoured to be updated with any new information.

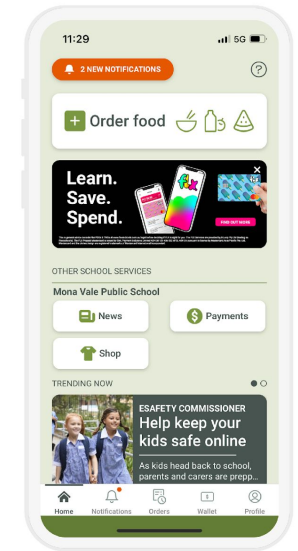
Mona Vale Public School Website:

<https://monavale-p.schools.nsw.gov.au/>

MVPS NEWSLETTER



FLEXISCHOOLS APP



School Bytes

In 2024 Mona Vale Public School is transitioning to the School Bytes Parent Portal for school operations.

Please download the School Bytes App.

Activating the Parent App

1. Access the app store on your phone and search for School Bytes. If you can't find it, here are the direct links:

Apple:

<https://play.google.com/store/apps/details?id=education.schoolbytes>

Android:

<https://play.google.com/store/apps/details?id=education.schoolbytes>

2. Download the School Bytes App.

3. Use your username and password created to log on.

4. If prompted, allow notifications.



Parent App

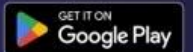
Available now!

Download on the App Store or Google Play by clicking the image below.



Key Features

- Get real time push notifications from your school
- Stay signed in and save your card for secure payments for fees and excursions
- Give consent, sign forms and respond to attendance alerts
- View the school calendar and news



Year 6 routines

Odd weeks 1, 3, 5, 7, 9, 11

MONDAY	TUESDAY	WEDNESDAY	THURSDAY	FRIDAY
Library	Sport, Music & Health/Drama Science (6 Purple, 6 Blue)	Scripture Science (6 Silver, 6 Yellow)		Sport Science (6 Orange)

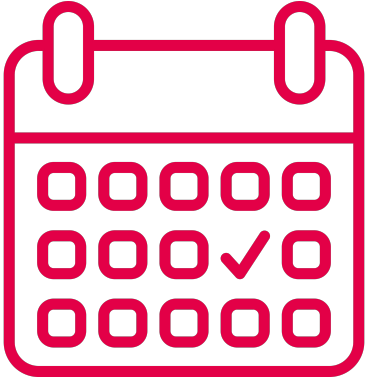
Even weeks 2, 4, 6, 8, 10

MONDAY	TUESDAY	WEDNESDAY	THURSDAY	FRIDAY
	Sport, Music & Health/Drama Science (6 Purple, 6 Blue)	Scripture Science (6 Silver, 6 Yellow)		Sport Science (6 Orange)



Library is every fortnight- please return the books/bags so that your child can borrow.

Important events



Event/s	Dates
PPSSA Commences	Week 5 - Friday 1st March
Parent Teacher Interview	Term 1 Week 8
Selective High School Placement Tests	9th May (Venue TBC)
Interrelate	Week 4, 5 and 6 (every Thursday)
School Camp (GABC)	Term 2 Week 4 (Mon 20th May - Weds 22nd May)
Cross Country	Term 2 - Thursday 2nd May

Moving into Year 7

If you have moved or changed address, please email the school with proof of your new address in preparation for High school. This will ensure the online form will be up to date with your correct home address when you complete the enrollment process.

High schools will check for evidence of address when you enrol also.

There is an Expression of interest for High Schools on the DoE website which will give high schools an idea of how many students will be in their catchment area. If you would like to complete this, the due date is March 28th. We will send out further details with instructions and details on enrolling your child later in the year.

How to find the form- Google- Moving into Year 7 DET

<https://education.nsw.gov.au/public-schools/going-to-a-public-school/translated-documents/enrolment-eoi-yr7>

MONA VALE
PUBLIC SCHOOL



NSW Department of Education

Moving into Year 7 in a NSW Government school | 2023

Time to start the transition of your child from Year 6 to Year 7

Your child's local school

Most NSW Government schools have designated intake areas so that all school-age children will be eligible to attend a government school – their local school.

Your child's permanent residential address determines which school is your child's local school. The School Finder tool at [Education School Finder](#) can help you locate the local school.

Most parents and carers in NSW choose their local school to provide an education of excellence for their child.

Local schools cater for students of all ability levels, including programs to challenge high potential and gifted students and programs for students with additional learning and support needs. They also offer a wide range of extra-curricular activities.

For more information:
[Education High School Enrolment](#)

Some are single-sex (boys or girls only) schools that accept students residing in their designated local enrolment area.

There are multi-campus colleges which include a number of schools or campuses, with each school or campus specialising in different areas. For example, there are junior campuses (Years 7-9 or 7-10), senior campuses (Years 10-12 or 11-12), academically selective campuses, co-educational campuses and single-sex campuses.

There are also central schools which offer many rural and isolated communities the opportunity to educate their children from Kindergarten through to Year 12 in one school setting. Many central schools use technology to link teachers and students in different schools so that a range of subjects is offered. Central schools also offer a broad range of extra-curricular activities.

education.nsw.gov.au



Term overview

Year 6 Term overviews can be viewed on the school website. A new term overview will be uploaded in the first week of each term.

These are general overviews for the year 6 content being taught and teachers will differentiate the learning to suit varied student abilities.

Week	English	Mathematics	History	Science and Technology	Creative Arts	PDHPE
2	Theme: Narrative Students are learning to identify and understand the features of a narrative orientation.	Theme: The number system extends infinitely to very large and very small numbers. - Representing Numbers - Multiplicative Relations	No lesson - Team Building	Lesson 1: Earth's Place in the Solar System Introduction	<p>Term Focus</p> <p>Music:</p> <p>This term, students will explore contemporary pop music using riffs, notes and chords to play the ukulele with activities in performance, listening and composition while developing skills in the reading and writing of ukulele chords and tab.</p> <p>Art:</p> <p>Students will create artworks relating to the value 'Strive and Thrive'.</p> <p>Drama:</p> <p>Year 6 students are introduced to and explore basic drama techniques and games</p>	<p>Term Focus</p> <p>Health, Wellbeing & Relationships UR Strong Friendology 101 Bounceback</p> <p>Interrelate</p> <p>Movement Skill & Performance Aquatics -Swimming Carnival</p> <p>Fundamental Movement Skills Locomotor Skills Small and Large Ball skills in modified games</p> <p>Fitness Testing Cardiovascular Endurance Test Flexibility Test Hand Eye Coordination Test</p> <p>Indigenous Games</p> <p>Healthy, Safe & Active Lifestyles Nutrition</p>
3	Theme: Narrative Students are learning to recreate a text using language features to enhance the reader's understanding of characters and setting.	Theme: The number system extends infinitely to very large and very small numbers. - Representing Numbers - Multiplicative Relations	No lesson: Swimming Carnival	Lesson 2: Earth's Place in the Solar System The Sun		
4	Theme: Narrative Students are learning to identify rising action in a narrative that leads to a subverted resolution.	Theme: Addition and subtraction problems can be solved by using a variety of strategies - Represents numbers - Additive relations	Focus: Becoming a Nation	Lesson 3: Earth's Place in the Solar System The Moon		
5	Theme: Narrative Students are learning to analyse how models of behaviour, key messages and multimodal features contribute to a narrative.	Theme: Addition and subtraction problems can be solved by using a variety of strategies - Represents numbers - Additive relations	Focus: Becoming a Nation	Lesson 4: Earth's Place in the Solar System Features of Planets		
6	Theme: Narrative Students are learning to use their knowledge of narrative and characterisation to create a sequel text.	Theme: What needs to be measured determines the unit of measurement. - Geometric Measure - Two- Dimensional Spatial Structure - Non- Spatial Measure	Focus: Becoming a Nation	Lesson 5: Earth's Place in the Solar System Australia's First Astronomers		

NEW CURRICULUM K-6

The new curriculum, gives students more time to focus on key learning areas so that they can acquire a deeper understanding of central concepts. It will ensure students develop strong foundations for learning, life and work.

The new curriculum is underpinned by extensive research and encompasses many aspects of schooling, including teaching, learning, assessment and reporting to parents. Some key curriculum changes include:

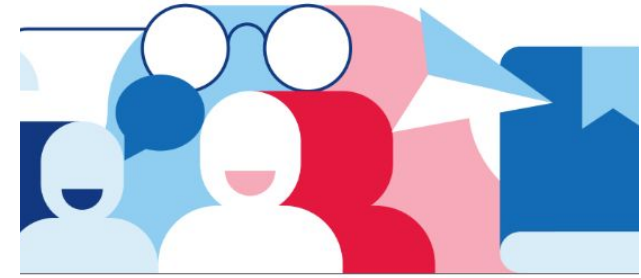
- Building strong foundations for future learning with new English and Mathematics syllabuses
- The new syllabuses focus on what is essential to know and do in early and middle years of schooling, and key learning areas in the senior years
- Providing more time for teaching by reducing the hours teachers spend on extra-curricular topics and issues and compliance requirements

For more information and/or queries around the new curriculum and its implementation at MVPS contact our Assistant Principal, Curriculum & Instruction:

Elise Milotic (elise.milotic@det.nsw.edu.au)

Erin Jones (erin.jones2@det.nsw.edu.au).

MONA VALE
PUBLIC SCHOOL



**For more information
on how you can
support your child at
home in regards to the
new curriculum scan
the QR code.**



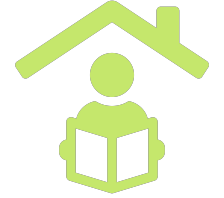
Home learning (Homework)

Home learning activities for Year 6:

- Week 4 is a trial run for home learning which has a number/range of activities.
 - Home Learning activities should be completed in preparation for High School
 - Activities will be posted on the Google Classroom and discussed in class. Students can complete the tasks on Google Classroom or they can complete them in an exercise book and bring it in to show the teacher. This will be provided as a non-digital option for those not wanting to use devices.



Google Classroom



5 Lime 2023

Instructions Student work

Homework activities:

Recommended

Reading - 10-30 minutes each night - this may be a novel, a magazine, comic or picture book.
Writing - For home learning each week, you will be completing a writing task on the computer. This is to help prepare you for NAPLAN, where you will be typing your writing on a laptop. If you do not have access to a laptop, you can write in an exercise book.
Spelling - Practise writing your words out on a piece of paper or in an exercise book.
Times Tables Practice - Hit the button

Optional

Data/Graph - Bar Charts
Place Value - Recognising numbers ABCYA Place Value Hockey

Mathletics - You will have tasks set for you to consolidate your learning in class. Go to <https://www.mathletics.com/au/> to sign in. Your teacher will give you your log in details

Reading Eggspress - This week you have a placement test to complete, as well as a comprehension unit. Go to <https://readingeggs.com.au/> to sign in. Your teacher will give you your log in details.

	Hit the Button - Quick fire m... https://www.topmarks.co.uk/maths		Bar Charts - Mathsframe https://mathsframe.co.uk/en/resou
	Place Value Hockey - Fun Ga... https://www.abcya.com/games/pla		Mathletics Sign In https://login.mathletics.com/
	Reading Eggs Page Not Fou... https://sso.readingeggs.com/login?		T1W4 writing task Google Docs
	Year 5 Writing Wishlist Chec... PDF		Spelling Term 1 homework w... Word

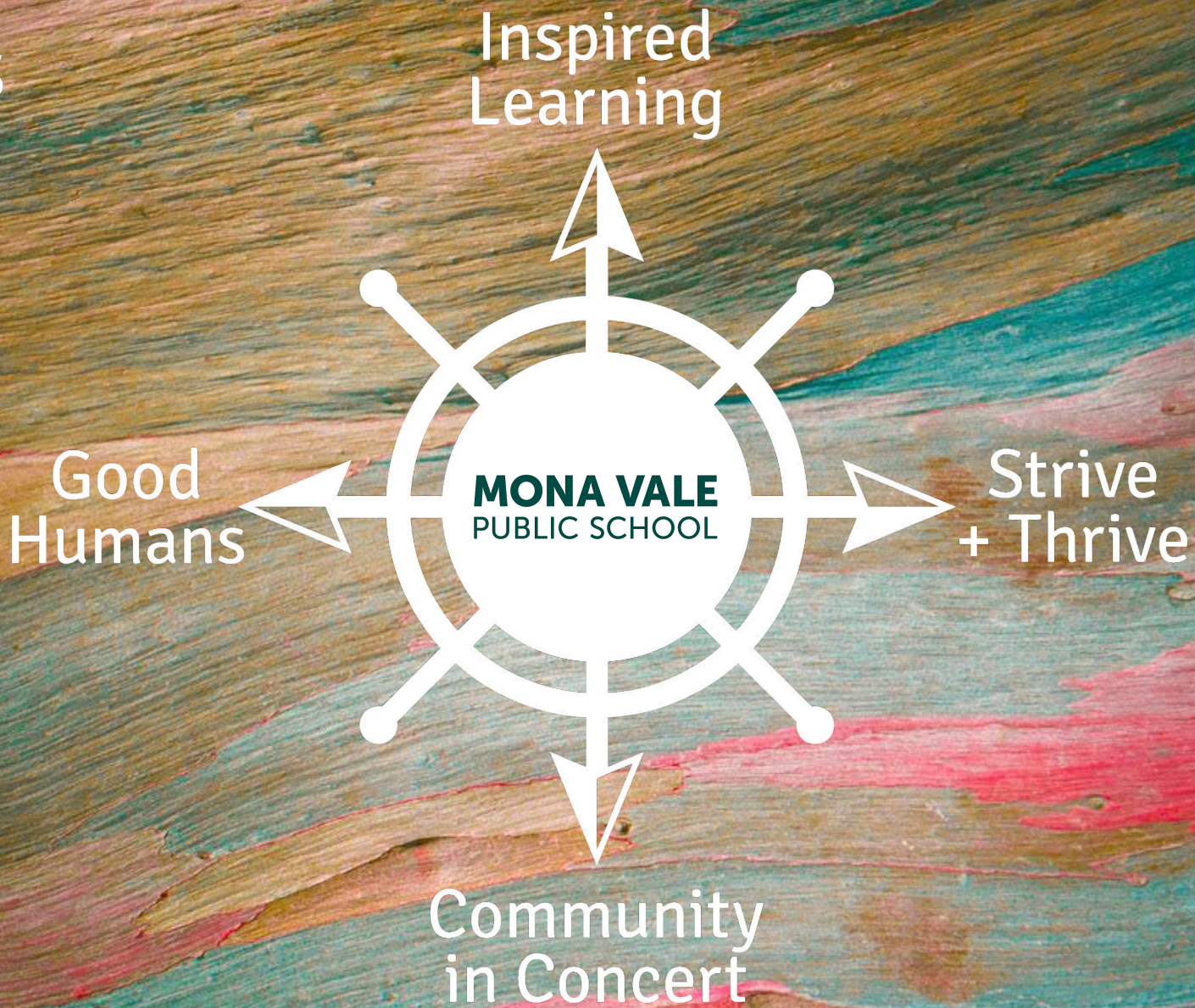
Our School Values



MONA VALE
PUBLIC SCHOOL



Empowered, enriched and equipped
good humans and learners for life.



Social Emotional Learning (SEL)

Friendology and U R Strong (Term 1)

How does URSTRONG work?

URSTRONG is all about empowering kids with friendship skills! We've developed a proven, skills-based strategy that teaches kid-friendly concepts, skills and language to help them build and maintain healthy friendships.



Kids love to recite the 4 Friendship Facts which helps them understand what to expect in their friendships.

THE FRIEND-O-METER

A visual tool used to help children think about the difference between healthy and unhealthy friendships. Students are taught the importance of spending the most time with friendships in the **Healthy Zone**.



The Friend-o-Meter is a great tool to understand how kids feel about their friendships and what they can do to improve them.

THE FRIEND-O-CYCLE

Demonstrates the normal cycle in a healthy friendship. Children learn, step-by-step, how to **Talk-it-Out** to put out their **Friendship Fires** and move towards **Forgive & Forget**.



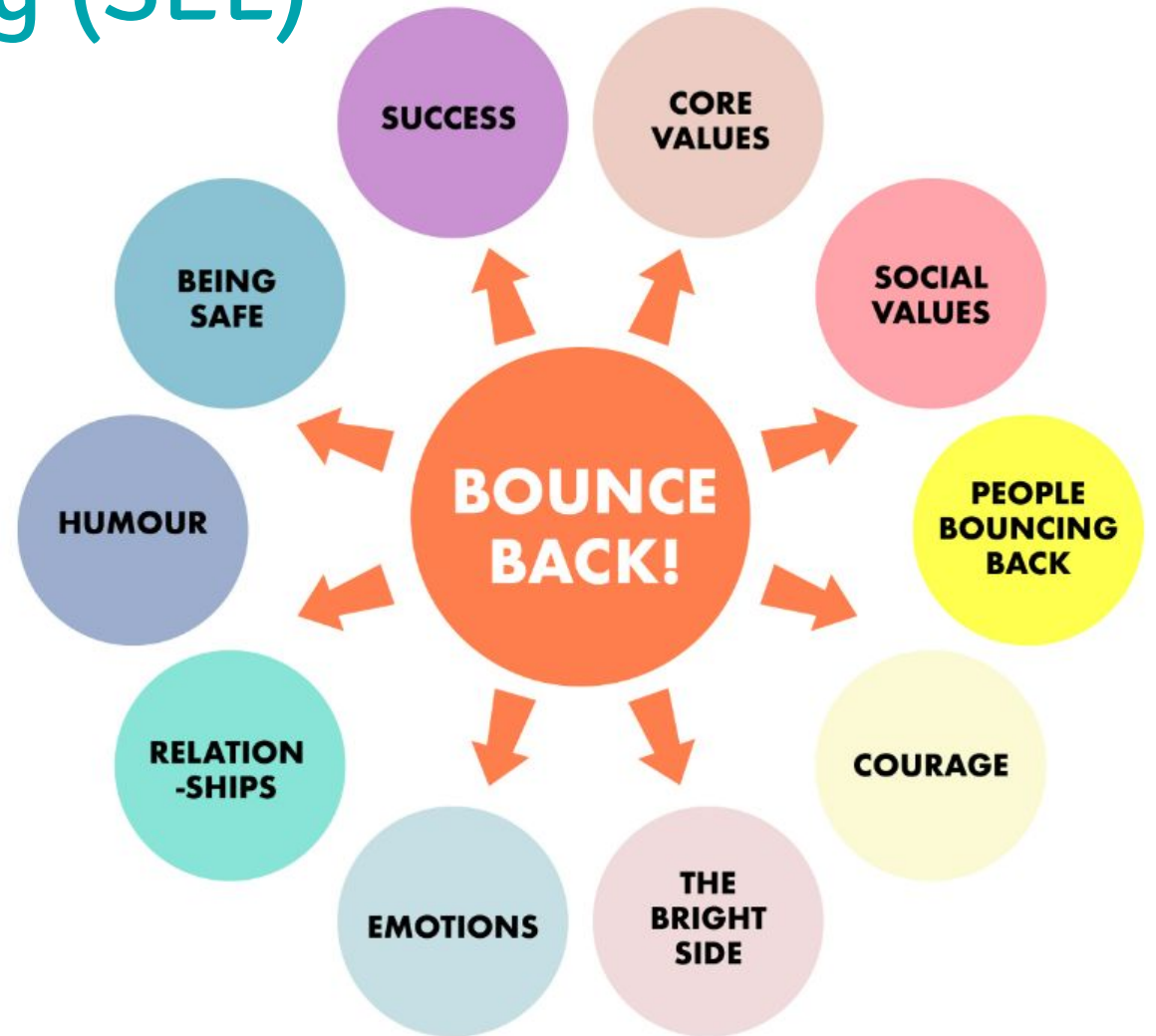
The Friend-o-Cycle helps kids understand how they can put out Friendship Fires and make their friendships closer and stronger.



URSTRONG encourages kids to stand up for themselves in a kind, respectful way. Identifying if a conflict is a Friendship Fire vs Mean on Purpose is key!

Social Emotional Learning (SEL)

Bounce back (Term 2-4)



Social Media Age Restrictions

Under 13 (with parental consent)	13 +	16+	18+	18 (13 with parental permission)
 GoBubble	 Facebook	 WhatsApp	 Meow Chat	 flickr
 PopJam	 Instagram	 Telegram	 Meet Me	 YouTube
 GRAM SOCIAL	 Twitter		 Tinder	 Spotify
	 Skype			
	 iTunes			
	 Pinterest			
	 MyLOL			
	 Wink			
	 Snapchat			
	 TikTok			
	 reddit			
	 askfm			
		17+		

Smart Watches:

If your child has a smart watch, these will need to be kept in their school bag during the day.

Technology Contract:

This agreement will need to be signed by both student and parent, and returned to the class teacher.

Mobile Phone use:

Student's mobile phones must stay in their bags at all times. They are not be used at any time within the school gates.



Empowered, enriched and equipped
good humans and learners for life.

Thank you for attending our Meet the Teacher Evening!

15 February, 2024



MONA VALE
PUBLIC SCHOOL